

Franklin County Mental Health and Addiction Crisis Center

adamhfranklin.org/crisis-center

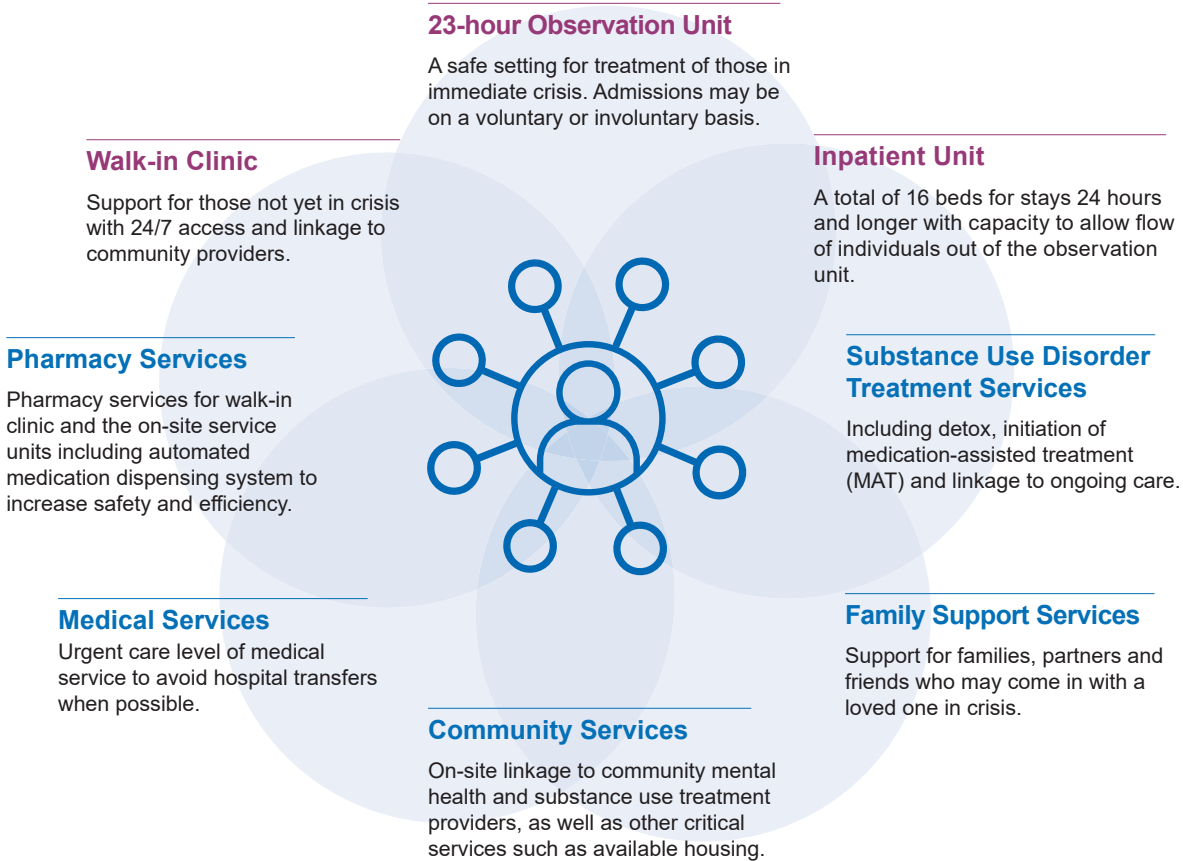


Creating a Full Continuum of Crisis Care

The Alcohol, Drug and Mental Health Board of Franklin County (ADAMH) is partnering with community stakeholders to address the continuum of crisis care in our community. The cornerstone of this continuum is the development of a new crisis center that will be the central and preferred destination in Franklin County for mental health and addiction crisis needs. The crisis center will provide a safe and secure location offering a full array of services with integrated peer support at all levels. Most importantly, the crisis center will offer a no-wrong-door approach to ensure any adult arriving at the crisis center receives services. This new resource is intended to benefit everyone from individuals in crisis and their families to the overcrowded hospitals and first responders currently stretched to their limits.

Levels of Care

Services



Community Needs

21%

of Franklin County's 1.3 million residents will experience mental illness in a given year. 10% will abuse or be dependent on drugs or alcohol.

30,000

mental health crisis episodes are treated in Franklin County annually (mostly in hospital emergency departments).

900

individuals needing medical clearances are transported from the current crisis facility to emergency departments.

23%

Franklin County's population is expected to grow by 8% and see a 23% increase in the need for mental health and addiction services over the next 10 years.

Franklin County Mental Health and Addiction Crisis Center

adamhfranklin.org/crisis-center



About the Crisis Center

Target Population



Adults age 18+ who are experiencing a mental health or addiction-related crisis in Franklin County, regardless of immigration, residency or insurance status.

Access



24 hours/7 days a week, including a public walk-in entrance and a separate entrance for first responders.

Estimated Volume



More than 28,000 encounters in year one, and approximately 34,500 encounters projected in year 10.

Location



A 3.046-acre parcel of land owned by ADAMH, located south of Harmon Avenue, east of South Souder Avenue, and north of Buchanan Drive.

Community Support

The crisis center has received support from a broad range of community partners throughout its planning and has capital commitments from both public and private sectors. Planning committees include voices from every part of the community in the crisis center's development – community providers, hospitals, law enforcement, advocacy organizations, and individuals and families with lived experience.

Community Capital Investment

\$50 million – Construction Costs

\$44.5 million – Committed from Partners

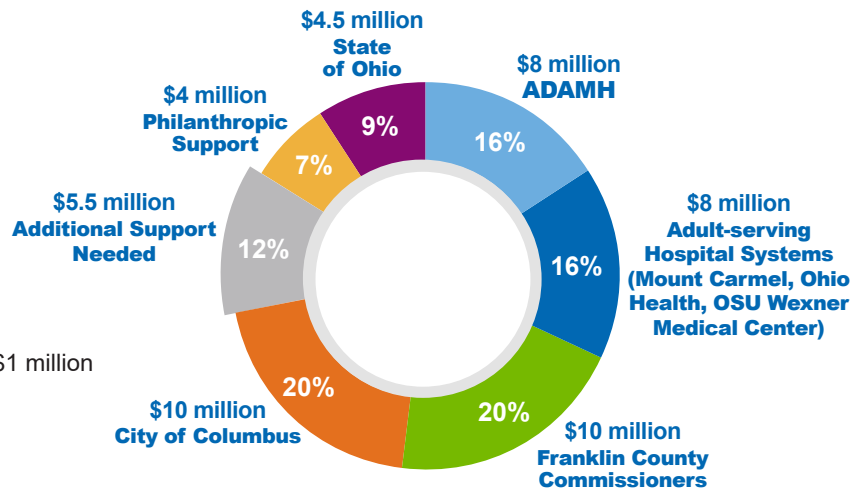
\$5.5 million – Additional Support Needed

Philanthropic Support

Osteopathic Heritage Foundations – \$2.5 million

Robert F. Wolfe and Edgar T. Wolfe Foundation – \$1 million

The Columbus Foundation – \$500,000



Completed Milestones

- Steering Committee completed recommendations (Q1 2021)
- Hammes Company Healthcare selected as Owner's Rep (Q2 2021)
- Harmon Avenue site location validated (Q2 2021)
- RFQ released for design firm and construction manager (Q2 2021)
- Community Advisory Council holds planning retreat (Q3 2021)
- RI International selected as crisis center operator (Q3 2021)
- NBBJ selected as crisis center design team lead (Q3 2021)
- Elford/Corna Kokosing selected as construction manager (Q4 2021)

Timeline

